



21<sup>st</sup> Annual Meeting

**European  
Dermatology  
Forum**

St. Gallen / Switzerland  
25 – 27 January 2018



# Meeting Program

## Thursday, January 25, 2018

## Room

17.00–17.15	<b>Welcome and Opening Address</b> <i>J. McGrath, President</i>	Salon Einstein
17.15–18.45	<b>Plenary Guest Lectures 1:</b> <i>Chairpersons: J. McGrath, C. Pincelli</i>	Salon Einstein
17.15–18.00	<b>Venture science of regenerative dermatology</b> <i>Prof. Jakub Tolar, Minnesota Stem Cell Institute, Minneapolis</i>	
18.00–18.45	<b>Live imaging of cutaneous immune responses to external stimuli</b> <i>Prof. Kenji Kabashima, Kyoto University Hospital, Kyoto</i>	
19.00	<b>Lobby Hotel Einstein, walk to the Abbey Library of St. Gallen</b>	
19.15	<b>The Abbey Library of St. Gallen, Guided tour</b>	
20.15	<b>Welcome Reception; Pfalz Keller, St. Gallen</b>	

## Friday, January 26, 2018

08.00–12.00	<b>Interactive Forum:</b> <i>Chairpersons: V. Del Marmol, Th. Schwarz</i>	Salon Einstein
	<b>1) Atopic Dermatitis: challenges &amp; unmet needs</b> <i>Moderator: Prof. G. Stingl, Vienna</i>	
08.00–08.30	<b>a) What can molecular profiling offer in atopic dermatitis?</b> <i>Prof. Stephan Weidinger, Kiel</i>	
08.30–09.00	<b>b) Updates &amp; Gaps in the physiopathology</b> <i>Prof. Thomas Bieber, Bonn</i>	
09.00–09.30	<b>c) Clinical and therapeutic challenges in atopic dermatitis</b> <i>Prof. Nick Reynolds, Newcastle</i>	
09.30–10.00	<b>d) Personal reflections and interactive discussion lead</b> <i>Prof. Georg Stingl, Vienna</i>	
10.00–10.30	<b>Coffee Break</b>	Foyer
10.30–12.00	<b>2) Drug development and cost management</b> <i>Moderator: M. Bagot, H. Gollnick</i>	Salon Einstein



# Meeting Program

**Friday, January 26, 2018**

**Room**

10.30–11.00	<b>Pharma-Academia relationship; building effective drug discovery collaborations</b> <i>Dr. Duncan Holmes, GSK Stevenage</i>	
11.00–11.30	<b>Financing R&amp;D without Impeding Access to New Medicines</b> <i>Prof. Thomas Pogge, New Haven</i>	
11.30–12.00	<b>General Discussion/Questions</b>	
12.00–13.00	<b>Industry Symposium</b> <i>Chairpersons: O. Larkö, V.-M. Kähäri</i>	Salon Einstein
12.00–12.20	Industry Symposium: AbbVie ( <i>S. Rubant</i> )	
12.20–12.40	Industry Symposium: Pierre Fabre Dermatology / Pierre Fabre Oncology ( <i>J.-J. Voisard/P. Maier</i> )	
12.40–13.00	Industry Symposium: Almirall ( <i>C. Diaz</i> )	
13.00–14.30	<b>Lunch</b>	Foyer
14.30–15.30	<b>Commissions and Discussion Groups</b>	
	<b>Guideline commission and group</b> <i>L. French, Zurich/A. Nast, Berlin/Th. Schwarz, Kiel/ (open to all members, corporates and guests)</i>	Salon Friedegg
	<b>Networks for rare diseases in Europe</b> <i>J. Bauer, Salzburg/Ch. Bodemer, Paris/ Ch. Zouboulis, Dessau/J. McGrath, London (open to all members, corporates and guests)</i>	Salon Spisegg
	<b>Undergraduate Training Commission/ Erasmus Project / DOIT Cyberderm</b> <i>M. Bagot, Paris/G. Burg, Zurich/H. Gollnick, Magdeburg/ P. Itin, Basel (open to all members, corporates and guests)</i>	Salon Buchegg
15.30–16.00	<b>Coffee Break</b>	Foyer
16.00–17.10	<b>Honorary Guest Lectures</b>	Salon Einstein
16.00–16.35	<b>Guest Lecture 1:</b> <i>Chairpersons: P. Arenberger, V.-M Kähäri</i>	
	<b>Liability for Medical Negligence: What should a dermatologist know?</b> <i>Dr. Allen Kachalia, Harvard Medical School, Boston</i>	
	<b>Discussion</b>	







# Meeting Program

16.35–17.10	<b>Guest Lecture 2:</b> <i>Chairpersons: L. French, H. Gollnick</i>	
	<b>Medical Support in Military &amp; Immigrant Missions by Dermato- Venereologists – a task with success?</b> <i>Dr. Marcellus Fischer, Hamburg</i>	
	<b>Discussion</b>	
17.10–17.15	<b>Short break</b>	
17.15–18.00	<b>General Assembly</b>	Salon Einstein
18.00–18.15	<b>Pro Meritis Awards 2018 ILDS Certificate of Appreciation for Humanitarian Dermatology</b>	
19.30	<b>Aperitif</b> , Hotel Einstein, St. Gallen	Foyer
20.00	<b>Dinner</b> , Hotel Einstein, St. Gallen	Salon Einstein

## Saturday, January 27, 2018

## Room

08.30–09.30	<b>Plenary Guest Lectures 2:</b> <i>Chairpersons: J. McGrath, C. Pincelli</i>	Salon Einstein
	<b>Microbial resistance to antibiotics</b>	
08.30–08.50	<b>Antibiotic resistance in acne</b> <i>Prof. Brigitte Dréno, Paris</i>	
08.50–09.20	<b>Antibiotic resistance; global concerns</b> <i>Dr. Nicholas M. Price, London</i>	
09.20–09.30	<b>Discussion/Questions</b>	
09.30–11.15	<b>Update from Sister Societies</b> <i>Chairpersons: M. Bagot, O. Larkö (open to all members, corporate and guests)</i>	Salon Einstein
	1) EADV Prof. L. Borradori, Berne (EADV President) 2) ESDR Prof. M. Gilliet, Lausanne (ESDR President) 3) UEMS Prof. P. Arenberger, Prague (UEMS/EBDV President) 4) ILDS Prof. B. Dréno, Nantes (ILDS Board Director) 5) EADO Prof. C. Garbe, Tübingen (EADO President) 6) IUSTI Prof. Mihael Skerlev, Zagreb (IUSTI Council member)	
11.15–11.30	<b>Closing</b>	
11.30	<b>Refreshing Drink</b>	



# Corporate Supporting Members

The EDF gratefully acknowledges the following Corporate Sponsors for their commitment and support in helping us achieve the goals of the Society:

abbvie

 almirall

 GALDERMA

 Celgene

\*\*  
Janssen  
PHARMACEUTICAL COMPANIES  
OF Janssen-Johnson

*Lilly*



 Mylan

L'ORÉAL  
Research & Innovation

  
Pierre Fabre

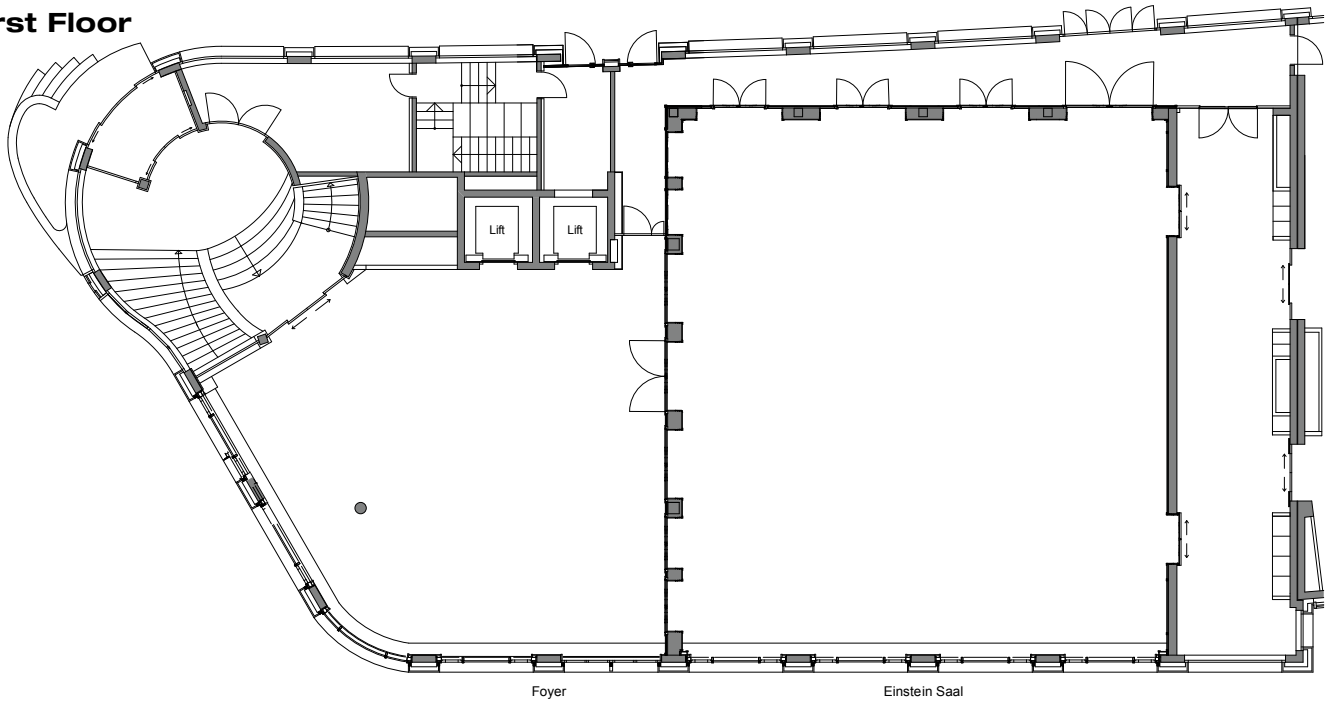
SANOFI GENZYME 

\*\* Janssen kindly supported the preparation of the scientific program of the EDF Annual Meeting 2018

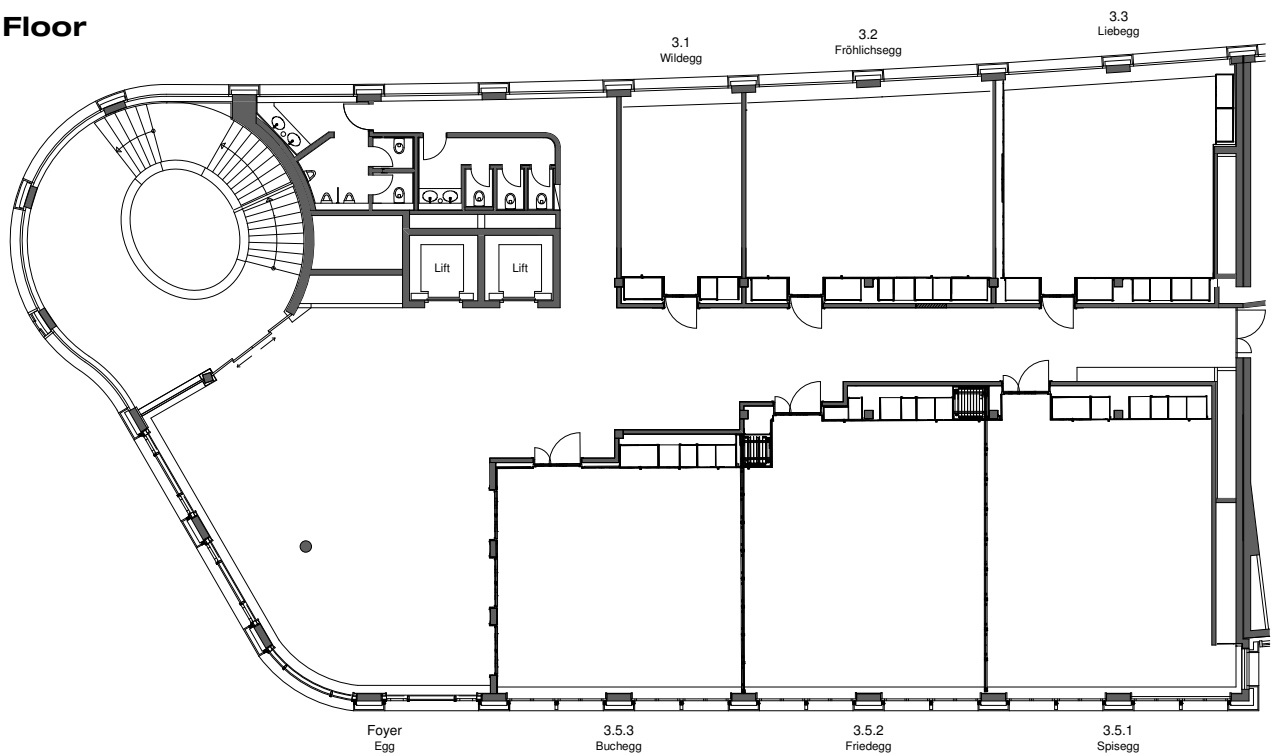
as per date of printing (15.1.2018)

## Hotel Einstein, St. Gallen

### First Floor



### Third Floor





# General Information

## **EDF Administrative Office**

Patrick Schaffter  
c/o University Hospital Zurich  
Dept. of Dermatology  
Gloriastrasse 31  
CH-8091 Zurich  
Tel.: +41 44 255 19 48  
Fax: +41 44 255 99 85  
E-mail: patrick.schaffter@usz.ch

## **Administrative Secretariat**

Convention Team Lucerne AG  
Oberseeburg 10  
CH-6006 Lucerne  
Tel.: +41 41 371 18 60 (before congress)  
Fax: +41 41 371 18 61  
Natel: 079 699 94 79 (on-site /Desk)  
E-mail: ctlag@bluewin.ch  
www.ctlag-congress.ch

## **Congress Venue**

Hotel Einstein  
Berneggstrasse 2, CH-9000 St. Gallen  
Tel. +41 71 227 55 55  
<http://www.hotel@einstein.ch>

## ***Social Events***

### **Welcome Reception**

Thursday, January 25, 2018, 19.00h, meeting point at the lobby Hotel Einstein, walk to the Abbey Library, 19.15h guided tour, 20.15h Welcome Reception at the Pfalz Keller

### **Dinner**

Friday, January 26, 2018, Aperitif 19.30h, Dinner 20.00h at the Hotel Einstein

## ***Congress Information***

### **Membership Fee / Contribution to Expenses**

The EDF will cover the current membership fee (EURO 100) for the members attending the annual meeting.

### **Currency**

The official currency in Switzerland is Swiss franc.

### **Language**

The official language of the congress will be English.

### **Emergency Services**

The phone number to dial for the police is 117, for the fire brigade 118 and for the ambulance 144.

### **Insurance, liability**

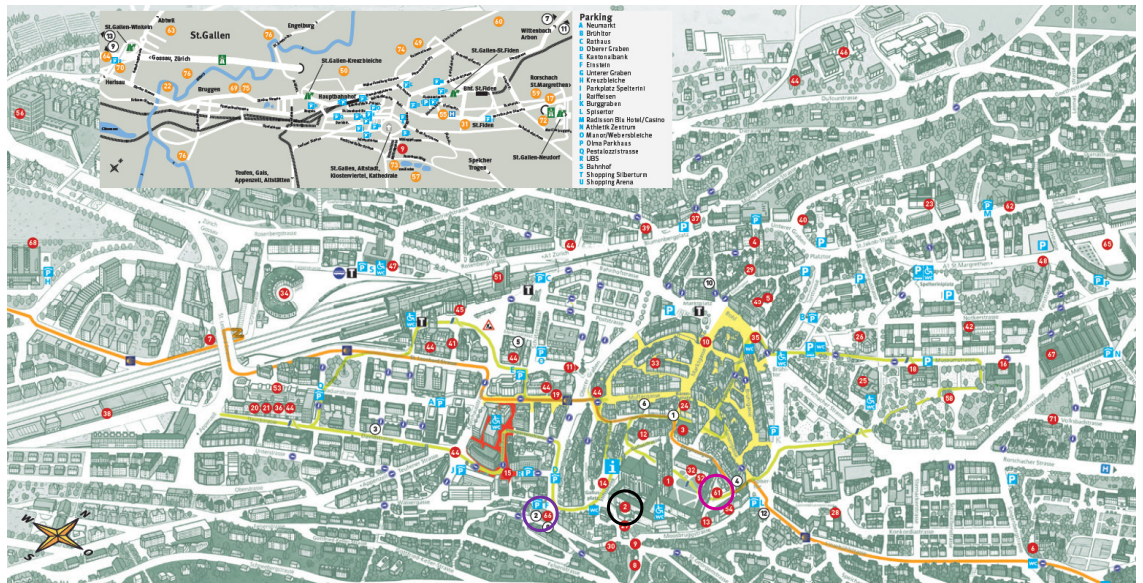
By registering for the EDF Meeting participants agree that neither the organising committee nor the congress office assume any liability (e.g.: loss, personal injury, property damage etc.) whatsoever. Participants are requested to make their own arrangements for health and travel insurance.





# General Information

## City Map of St. Gallen



○ Hotel Einstein    ○ Pfalz Keller    ○ The Abbey Library

## Travel Information

By air:

Zurich Airport, also known as Kloten Airport, is the largest international airport of Switzerland and the principal hub of Swiss International Air Lines. Swiss International Airways - [www.swiss.com](http://www.swiss.com). *Zurich Airport*: [www.zurich-airport.com](http://www.zurich-airport.com)

*Alternative possibility*: Airport St. Gallen–Althenrhein (from and to Vienna Airport only)

(for further information please see: [www.airport-stgallen.com](http://www.airport-stgallen.com))



By train: (Zurich Airport – St. Gallen SBB Main Station)

From Zurich Airport: 1h (see the SBB site for timetable info – [www.sbb.ch](http://www.sbb.ch))

By bus: (from SBB St. Gallen Main Station – hotel Einstein)

Bus no 10 (to Abacus-Place) brings you directly to the Hotel Einstein (Bus Stop »Einstein«)

Driving time approx. 2 minutes from the main station. You also can get within 10 minutes walking distance to the hotel.





