

Program
www.euroderm.org



© Zürich Tourismus

19th Meeting of the

European Dermatology Forum

January 21–23, 2016

Zurich, Switzerland



Meeting Program

Thursday, January 21, 2016

Room

17.30 – 17.45	Welcome and Opening Address <i>L. French, President</i>	Helvetia
17.45 – 19.15	PLENARY GUEST LECTURE 1: PARADIGM SHIFTS IN BIOMEDICINE <i>Chairpersons: J. McGrath, L. French</i>	
17.45 – 18.30	Healthy skin-derived proteins as templates for designer peptide antibiotics <i>Jens Schröder (Kiel)</i>	
18.30 – 19.15	mRNA-based therapeutics <i>Ugur Sahin (Mainz)</i>	
19.45	Meeting in the hotel lobby (participants Welcome Reception)	
20.00	Welcome Reception	Restaurant Clouds, Prime Tower

Friday, January 22, 2016

8.00 – 09.30	INTERACTIVE FORUM: FORWARD LOOKING ISSUE <i>Chairpersons: V. Pigué, C. Pincelli</i>	Helvetia
	Grand Challenges in Global Skin Health – Action plan ? <i>Matthias Augustin (Hamburg), Christopher Griffiths (Manchester), Roderick Hay (London)</i>	
09.30 – 10.00	Coffee Break	Foyer
10.00 – 12.00	WORKING – GROUP DISCUSSIONS AND PLENARY PRESENTATION	
10.00 – 10.10	Plenary introductory comment to challenge A: <i>Chairperson: J. McGrath (London)</i>	
10.10 – 10.20	Plenary introductory comment to challenge B: <i>Chairperson: J. J. Grob (Marseille)</i>	
10.20 – 11.15	Working-Group Discussion for Challenge A: How to attract students and foster academics in dermatology? <i>Chairpersons: O. Larkö, M. Bagot, J. McGrath</i>	Helvetia
	Working-Group Discussion for Challenge B: New proposals and models for maximizing outcomes of clinical trials ? <i>Chairpersons: J. J. Grob, C. Pincelli, C. Smith</i>	Rhein



Meeting Program

	Including short lecture on “Improvement of clinical trials-ACORN project” <i>Spaeker: Diane Thiboutot (Philadelphia)</i> <i>Participants: Alison Layton (Harrogate), Jerry Tan (Vancouver)</i>	
11.15 – 12.00	Plenary presentation and discussion of proposals formulated in working-groups <i>Chairpersons: J. McGrath, J. J. Grob</i>	Helvetia
	Proposals of Group A	
	Proposals of Group B	
12.00 – 13.00	Industry Symposium <i>Chairpersons: V. del Marmol, V-M. Kähäri</i>	Helvetia
12.00 – 12.30	Industry Symposium A: Abbvie <i>Simone Rubant (Wiesbaden)</i>	
12.30 – 13.00	Industry Symposium B: Pierre Fabre Dermatology <i>Jean-Jacques Voisard (Lavaur)</i>	
13.00 – 14.30	Lunch	Bavaria
13.00 – 14.30	Liaison Meeting (internal)	Danubius
14.30 – 15.30	COMMISSION AND DISCUSSION GROUPS	
Room A	Guideline commission and group <i>Alexander Nast (Berlin), Thomas Schwarz (Kiel)</i> (open to all members, corporates and guests)	Helvetia
Room B	Geneskin group/ European Reference Networks <i>Johannes Bauer (Salzburg), John McGrath (London)</i> (open to all members, corporates and guests)	Stadt Zürich
Room C	Undergraduate Training Commission / Erasmus Project <i>Martine Bagot (Paris), Harald Gollnick (Magdeburg), Günter Burg (Zurich)</i> (open to all members and guests)	Rhein
15.30 – 16.00	Coffee Break	Foyer
16.00 – 17.00	HONORARY GUEST LECTURE <i>Chairperson: L. French</i> Key decision making in Corporate Healthcare <i>Humberto C. Antunes, CEO of Nestlé Skin Health (Lausanne)</i>	Helvetia
17.00 – 18.00	General Assembly	



Meeting Program

18.00 – 18.15	Pro Meritis Award 2016	
19.30	Apéritif	Lucid Bar, Hotel Lobby
20.00	Gala Dinner	Bavaria

Saturday, January 23, 2016

Room

09.00 – 10.45	Reports of the Pan-European Societies – (open to all members, corporates and guests) <i>Chairpersons: T. Schwarz, P. Arenberger</i> 1) EADV <i>E. Tschachler (Vienna)</i> 2) ESDR <i>J. Barker (London)</i> 3) UEMS <i>M. Czamecka-Operacz (Poznan)</i> 4) ILDS <i>Ch. Griffiths (Manchester)</i> 5) EAAD <i>A. Rubins (Riga)</i> 6) IUSTI <i>M. Skerlev (Zagreb)</i>	Helvetia
10.45 – 11.45	European Health & Science Politics: Horizons, Visions and Hurdles <i>Chairpersons: H. Gollnick, V. Piguet</i> Standardisation of healthcare services – Risks of a technical perspective to medicine from insurers point of view <i>Sarah Meckling-Geis (Berlin)</i> Horizon 2020 - Opportunities for Health Research in Europe <i>Andreas Krell (Brussels)</i>	Helvetia
11.45 – 12.00	Closing	



Sponsors

The EDF gratefully acknowledges the following Corporate Sponsors for their commitment and support in helping us achieve the goals of the Society:

abbvie

 Almirall

 GALDERMA

AMGEN®

 Celgene

Janssen
PHARMACEUTICAL COMPANIES
of Johnson & Johnson

Lilly

 L E O

MEDA

L'ORÉAL
Research & Innovation

 Stiefel
a GSK company

 Pfizer

Pierre Fabre
DERMATOLOGIE

as per date of printing (January 15, 2016)

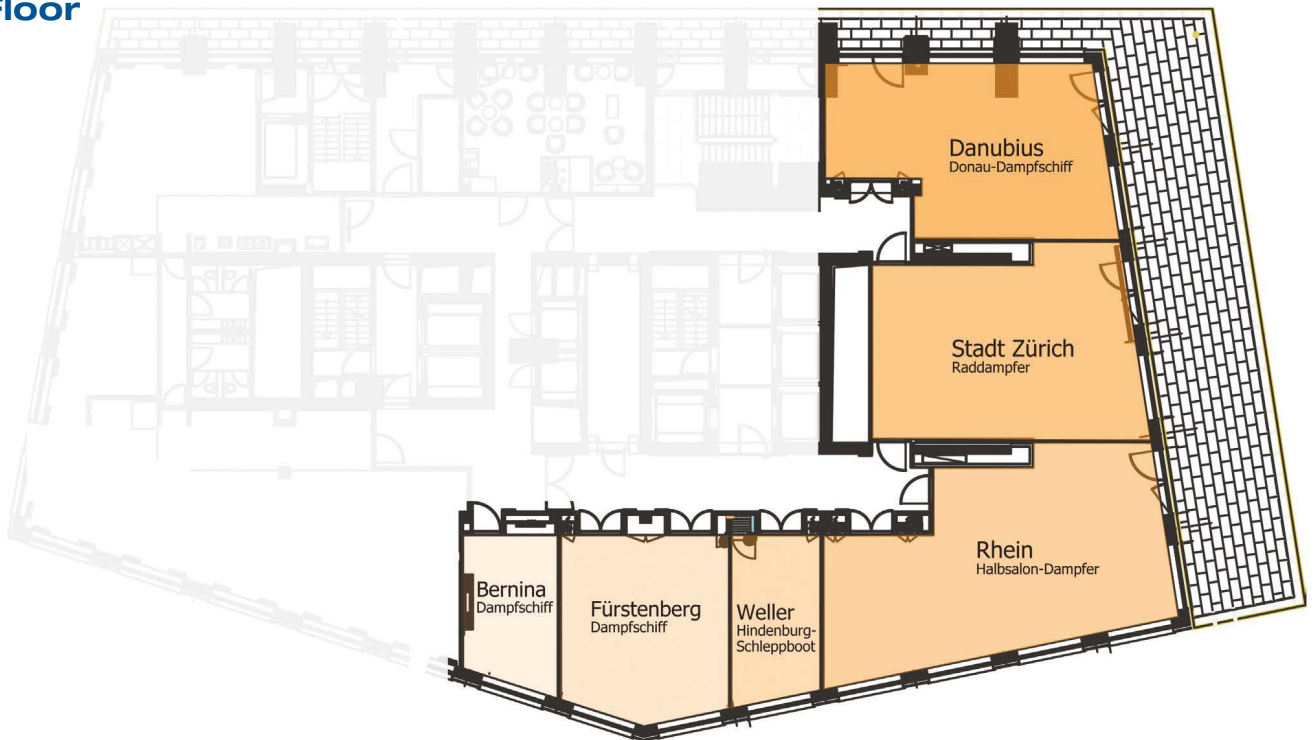


Floorplan

1st Floor



2nd Floor





General Information

EDF Administrative Office

Patrick Schaffter
c/o University Hospital Zurich
Dept. of Dermatology
Gloriastrasse 31
CH-8091 Zurich
Tel.: +41 44 255 19 48
Fax: +41 44 255 99 85
E-mail: patrick.schaffter@usz.ch

Administrative Secretariat

Convention Team Lucerne AG
Oberseeburg 10
CH-6006 Lucerne
Tel.: +41 41 371 18 60 (before congress)
Fax: +41 41 317 18 61
Natel: 079 699 94 79 (on-site/Desk)
E-mail: ctlag@bluewin.ch
www.ctlag-congress.ch

Congress Venue

Renaissance Zürich Tower Hotel, Turbinenstrasse 20, CH-8005 Zürich
Tel. +41 44 630 30 30; Fax: +41 44 630 33 33; www.renaissancezurichtower.com

Social Events

Welcome Reception

Thursday, January 21, 2016, 20.00h, at the Restaurant CLOUDS, Maagplatz 5, CH-8005 Zurich

Gala Dinner

Friday, January 22, 2016, 19.30h Apéritif, 20.00h Gala Dinner at the Hotel Renaissance Zürich Tower, Room Bavaria

Membership Fee / Contribution to Expenses

The EDF will contribute € 150 to your expenses, at the same time the membership fee will be waived. Participants who did not pay the membership fee 2014 will only receive € 50.

Currency

The official currency in Switzerland is the Swiss franc.

Language

The official language of the congress will be English.

Emergency Services

The phone number to dial for the police is 117, for the fire brigade 118 and for the ambulance 114.

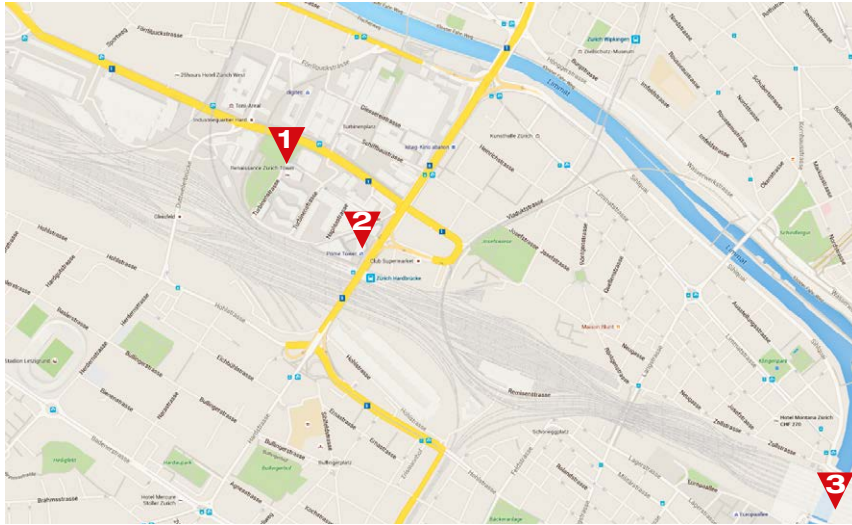
Insurance, liability

By registering for the EDF Meeting participants agree that neither the organising committee nor the congress office assume any liability (e.g.: loss, personal injury, property damage etc.) whatsoever. Participants are requested to make their own arrangements for health and travel insurance.





General Information



City Map

- 1) Congress Venue:
Hotel Renaissance Zürich Tower
- 2) Restaurant CLOUDS (Prime Tower)
- 3) Main Station SBB

Travel Information and Directions



By air:
Zürich Airport
www.flughafen-zuerich.ch

By train:

The train brings you within 10 min. from Zurich Airport to Zurich Main Station (please check timetable by accessing www.sbb.ch)

From the Main Station Zurich to the hotel: take tram no 4 at «Bahnhofquai» until tram stop «Technopark», then approx 2 min. walking distance to the Renaissance Zurich Tower Hotel. The Hotel is situated behind the SWISSCOM building. Taxi from the Main Zurich Station to the hotel, driving time about 10 min.

By taxi:

From Zurich Airport to the hotel, driving time approx 20–25 min, cost approx CHF 55.

