



© www.chillon.ch

20th Meeting of the



**European
Dermatology
Forum**

January 19 – 21, 2017
Montreux, Switzerland



Meeting Program

Thursday, January 19, 2017

Room

17.30 – 17.45	Welcome and Opening Address <i>L. French, President</i>	Salon 4 Saisons
17.45 – 19.15	Plenary Guest Lectures 1: <i>Chairpersons: J. McGrath, L. French</i>	
17.45 – 18.30	Highly multiplexed imaging of tissues with subcellular resolution by mass cytometry <i>Prof. Bernd Bodenmiller (Institute of Molecular Life Sciences University of Zurich, Zurich)</i>	
18.30 – 19.15	The therapeutic potential of CRISPR-Cas and other designer nucleases <i>Prof. Toni Cathomen (Institute for Cell and Gene Therapy Medical Center, University of Freiburg, Freiburg)</i>	
20.00	Welcome Reception; Hotel Suisse Majestic	Winter Garden

Friday, January 20, 2017

08.00 – 12.00	Interactive Forum: <i>Chairpersons: M. Augustin, H. Gollnick, V. Piguet, T. Schwarz</i>	Salon 4 Saisons
	1) Environment & Skin Health	
08.00 – 08.25	a) Water, skin barrier function and eczema: how hard can it get? <i>Dr. Carsten Flohr, (Unit for Population-Based Dermatology Research, St John's Institute of Dermatology, London)</i> Moderator: V. Piguet	
08.25 – 08.50	b) Risk assessment models - new developments <i>Assoc. Prof. Marlon R. Schneider (Federal Institute for Risk Assessment, Berlin)</i> Moderator: H. Gollnick	
08.50 – 09.15	c) Atmospheric pollution - ruining your skin? <i>Dr. rer. san. Tamara Schikowski (Leibniz Research Institute for Environmental Medicine, Düsseldorf)</i> Moderator: Th. Schwarz	
09.15 – 10.00	General discussion / Questions	
10.00 – 10.30	Coffee Break	Winter Garden
10.30 – 12.00	2) Occupational Skin Disease; How to move forward? Moderator: M. Augustin	



Meeting Program

10.30 – 11.00	Occupational dermatoses. Emerging challenges and new options for dermatology <i>Prof. Swen Malte John (Institute for interdisciplinary Dermatological Prevention and Rehabilitation (iDerm), Osnabrück)</i>	
11.00 – 11.30	WHO's global perspective and current activities on UV induced skin cancer <i>Dr. Emilie van Deventer (Radiation Programme Department of Public Health, Environmental and Social Determinants of World Health Organization, WHO, Geneva)</i>	
11.30 – 12.00	General Discussion / Questions	
12.00 – 13.00	Industry Symposium <i>Chairpersons: O. Larkö, V.-M. Kähäri</i>	Salon 4 Saisons
12.00 – 12.20	Abbvie AG (S. Rubant, M. Mayrhofer-Iro)	
12.20 – 12.40	Pierre Fabre Dermatologie (J.J. Voisard)	
12.40 – 13.00	Lilly (Y. Dutronc)	
13.00 – 14.30	Lunch	Winter Garden
14.30 – 15.30	Commissions and Discussion Groups	
Room A	Guideline commission and group <i>A. Nast, Berlin / Th. Schwarz, Kiel (open to all members, corporates and guests)</i>	Salon 4 Saisons
Room B	Geneskin group / European Research Networks <i>J. Bauer, Salzburg / J. McGrath, London (open to all members, corporates and guests)</i>	Salon Riviera
Room C	Undergraduate Training Commission / Erasmus Project <i>M. Bagot, Paris / H. Gollnick, Magdeburg / G. Burg, Zurich / P. Itin, Basel (open to all members, corporates and guests)</i>	Salon Lavaux
Room D	Acquired immunological LOW prevalence and Complex Adult diseases of the skin (ALLOCATE) / European Research Networks <i>Ch. Zouboulis, Berlin, V. Piguët, Cardiff (open to all members, corporates and guests)</i>	Salon Dézaley
15.30 – 16.00	Coffee Break	Winter Garden
16.00 – 17.15	Honorary Guest Lectures	Salon 4 Saisons





Meeting Program

16.00 – 16.30	Guest Lecture 1: Chairpersons: J. Rees / J.J. Grob Four reasons why drugs are expensive, of which two are false <i>Dr. Jack Scannell</i> (Drug and Biotechnology Investment, UBS, Edinburgh)
16.30 – 17.00	Guest Lecture 2: Chairpersons: H. Gollnick / L. French Value-based pricing approaches for new targeted therapies in order to ensure equitable and continued access to affordable cancer care <i>Prof. Wolf-Dieter Ludwig (Helios Clinic, Hematology, Oncology & Tumor immunology, Berlin / EMA Management Board, London)</i>
17.00 – 17.15	Discussion
17.15 – 18.00	General Assembly
18.00 – 18.10	Pro Meritis Awards 2017
19.00	Meeting in the lobby Hotel Suisse Majestic; transfer to Chillon Castle
19.30	Aperitif at the Chillon Castle on the lakeside
20.00	Gala Dinner at the Chillon Castle on the lakeside
22.30	Transfer back to Montreux, Hotel Suisse Majestic

Saturday, January 21, 2017

Room

09.00 – 10.00	Plenary Guest Lecture 2: <i>Chairpersons: P. Arenberger, C. Pincelli</i> Leadership in crises and emergencies <i>Swiss Ambassador Christian Dussey,</i> (Director of the Geneva Centre for Security Policy, GCSP)	Salon 4 Saisons
10.00 – 10.30	Coffee Break	Winter Garden
10.30 – 11.45	Update from Sister Societies (open to all members, corporates and guests) <i>Chairpersons: M. Bagot, V. del Marmol</i> 1) EADV <i>L. Borradori (Berne)</i> 2) ESDR <i>M. Schmuth (Innsbruck)</i> 3) UEMS <i>P. Arenberger (Prague)</i> 4) ILDS <i>H. Lui (Vancouver)</i> 5) EADO <i>C. Garbe (Tübingen)</i>	Salon 4 Saisons
11.45 – 12.00	Closing	



Corporate Supporting Members

The EDF gratefully acknowledges the following Corporate Sponsors for their commitment and support in helping us achieve the goals of the Society:

abbvie

 Almirall

 GALDERMA

 Celgene

**
 Janssen
— Johnson & Johnson

 Lilly


L E O

 MEDA

L'ORÉAL
Research & Innovation

Pierre Fabre
DERMATOLOGIE

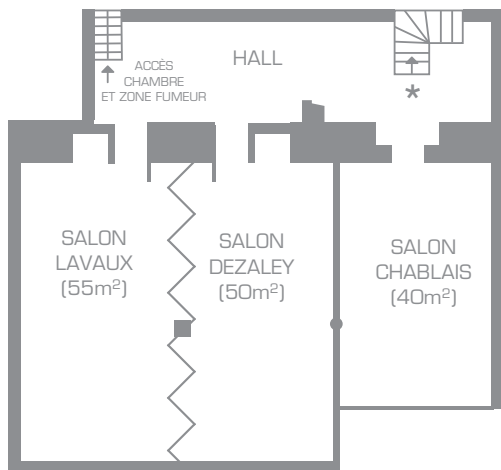
** Janssen kindly supported the preparation of the scientific program of the EDF Annual Meeting 2017

as per date of printing (15.1.2017)



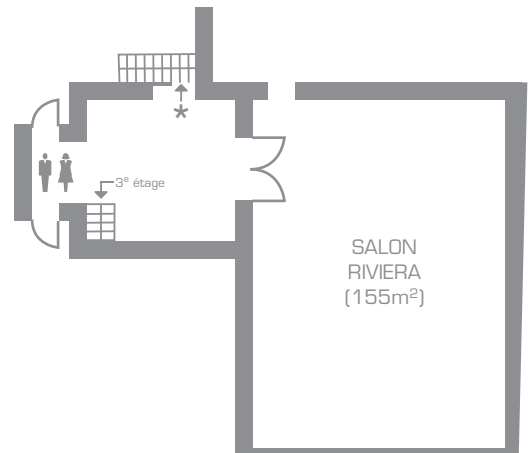
Hotel Suisse Majestic, Montreux

1^{er} étage

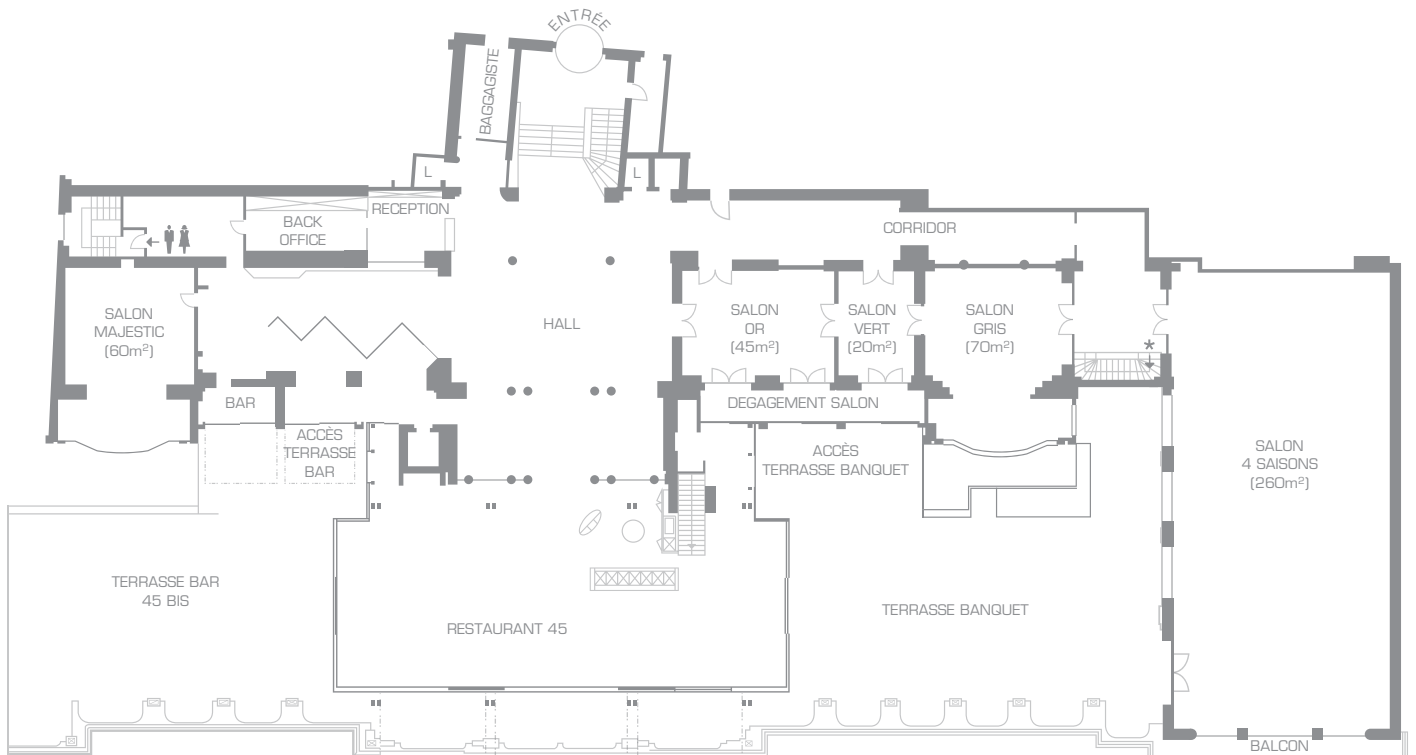


* Accès : Salon Riviera
Toilettes

2^e étage



* Accès : Salon Lavaux
Salon Dezalas
Salon Chablais





General Information

EDF Administrative Office

Patrick Schaffter
c/o University Hospital Zurich
Dept. of Dermatology
Gloriastrasse 31
CH-8091 Zurich
Tel.: +41 44 255 19 48
Fax: +41 44 255 99 85
E-mail: patrick.schaffter@usz.ch

Administrative Secretariat

Convention Team Lucerne AG
Oberseeburg 10
CH-6006 Lucerne
Tel.: +41 41 371 18 60 (before congress)
Fax: +41 41 371 18 61
Natel: 079 699 94 79 (on-site/Desk)
E-mail: ctlag@bluewin.ch
www.ctlag-congress.ch

Congress Venue

Avenue des Alpes 45, CH-1820 Montreux
Tel. +41 21 966 33 33
<http://www.suisse-majestic.com/en.html>



Social Events

Welcome Reception

Thursday, January 19, 2017, 20.00h, at the Lounge Hotel Suisse Majestic, Montreux

Gala Dinner

Friday, January 20, 2017, 20.00h, (Aperitif 19.30h) at the Chillon Castle

Meeting point for the Gala Dinner: 19.00h at the lobby Hotel Suisse Majestic, transfer to the Chillon Castle by bus. Departure Chillon Castle by bus at 22.30h.

Important; dress code. As the Gala dinner will be held in the Chillon Castle, we recommend our guests not to wear lightweight clothing. Especially for ladies, light dress, high heels and summer shoes are not recommended.

Congress Information

Membership Fee / Contribution to Expenses

The EDF will contribute € 150 to your expenses, at the same time the membership fee will be waived. Participants who did not pay the membership fee 2015 will only receive € 50.

Currency

The official currency in Switzerland is Swiss franc.

Language

The official language of the congress will be English.

Emergency Services

The phone number to dial for the police is 117, for the fire brigade 118 and for the ambulance 114.

Insurance, liability

By registering for the EDF Meeting participants agree that neither the organising committee nor the congress office assume any liability (e.g.: loss, personal injury, property damage etc.) whatsoever. Participants are requested to make their own arrangements for health and travel insurance.





General Information

City Map of Montreux



★ Train Station Montreux. The Hotel Suisse Majestic is situated opposite to the railway station

Travel Information

By air:

Geneva or Zurich Airports, alternatively Berne or Basel Airports



By train:

From Geneva Airport: 1h (Geneva – Lausanne – Montreux)

From Zurich Airport: 2h50 (Zurich – Berne/Lausanne – Montreux)

